

Café #2

SCIENCE OREGON 2020

Jill Kirk

What does success look like in 12 years?

Promoting Science!

- * We'll know it when we see it!
- * Life-long learning
- * Perpetual Curiosity
- * It's a world-play
- * Encourage experimentation
- * Failure is OK.
- * Teach how to learn
- * Be nimble
- * Evolutionary
- * Distributed
- * Organic
- * Expanded Access

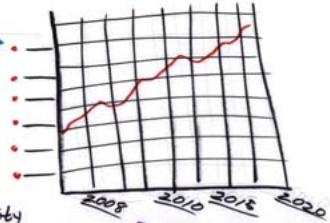


Flat & Fast!

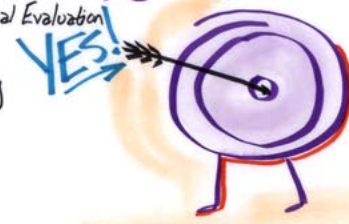
★ Learning as Gaming



What are the metrics?



40-40-20



The system works as designed

Students are responsible & in charge

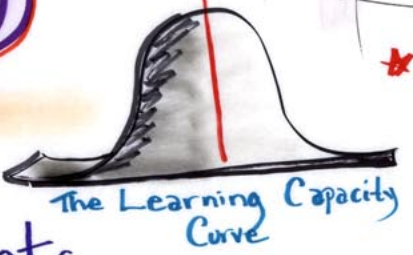
Funding Service Ed

Community Service Americorps

Annual Evaluation



The Education Conveyor Belt



★ Preserve Forgiveness

★ Expand beyond Science Learning

assets

- * We have successes
- * Common vision
- * Oregon is attractive, we can import Science
- * + Demographics
- * Political will

Proficiency-based Education = Empowered Students

Workforce Oregon

★ Support Multiple learning paths & approaches

